



2021 WQ Sampling Results

LAKE POINSETT

E.coli

Safe Level at or below 235 #/100 mL

Microcystin

Safe Level at or below 8 micrograms/L

Sampling Site	June	July	Aug	Sept	June	July	Aug	Sept
A. Rec. Area Swim Beach	4.0	<1	<1	330	<0.1	0.8	3.2	16.9
B. Sorenson	19.8	2	<1	1.0	<0.1	1.3	3.9	0.8
C. Saarinen	3.1	<1	6.3	5.1	<0.1	3.7	9.9	0.6
D. Prestrude	5.099	1	6.3	35.9	<0.1	0.5	6.2	1.9
A. Lake Albert Access								

Center of LAKE POINSETT

– Excessive Nutrients mg/L

CHL-a Safe level at or below 37.8 ppb

	Total Depth	Secchi-Water Clarity	Ammonia	Nitrite Nitrate	TKN-Nitrogen	Phosphorous	CHL-a
JUNE	- Ft.	0.84 meters	0.13	<0.02	1.02	0.1769	-
JULY	- Ft.	1.34 meters	<0.05	<0.2	1.29	0.1980	56.07
AUGUST	-Ft.	.508 meters	<.05	<0.2	1.76	0.277	69.68

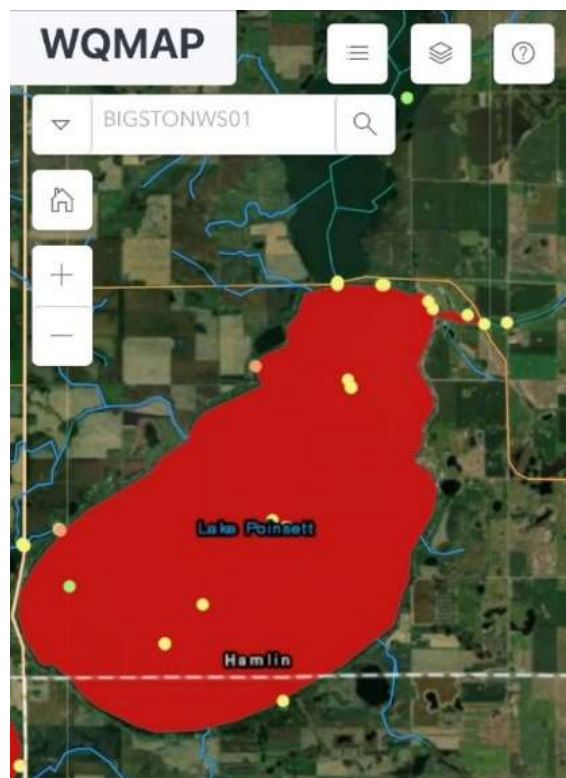
SD DANR – Water Quality Monitoring Access Portal

For those who enjoy more technical data, Lake Poinsett’s water quality data can be found on the SD DANR website.

- A map like the one on right will pop up.
- Locate the waterbody
- Click a yellow dot (WQ monitoring stations) to view recent data.

Click link for WQ Monitoring Access Portal:

<https://apps.sd.gov/NR92WQMAP>



WQ Map: DANR Watershed Protection Program